

Color Chart Guide

ATTENTION: The color chart is for reference only. Actual color may vary due to monitor color settings.

Plain Colors - Basic

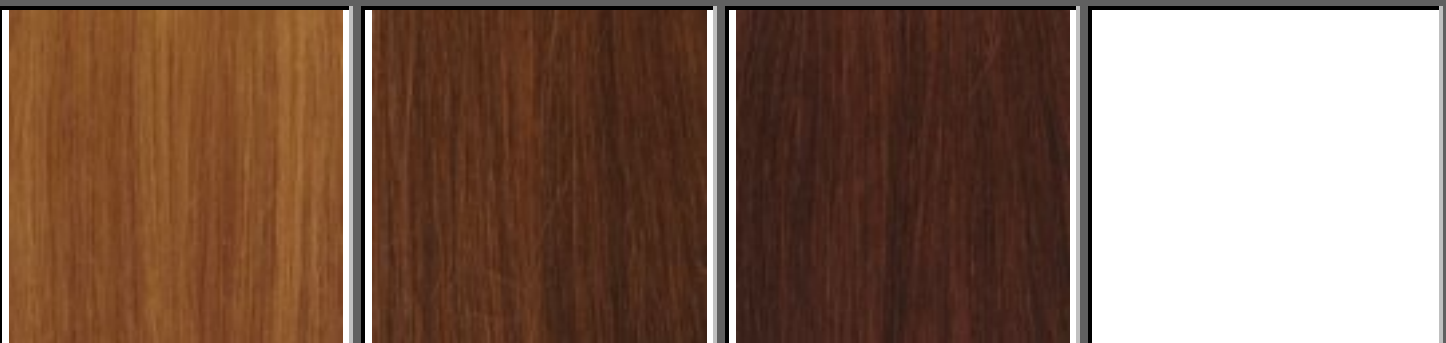


1 - Jet Black

1B - Off Black

2 - Darkest Brown Black

4 - Dark Brown

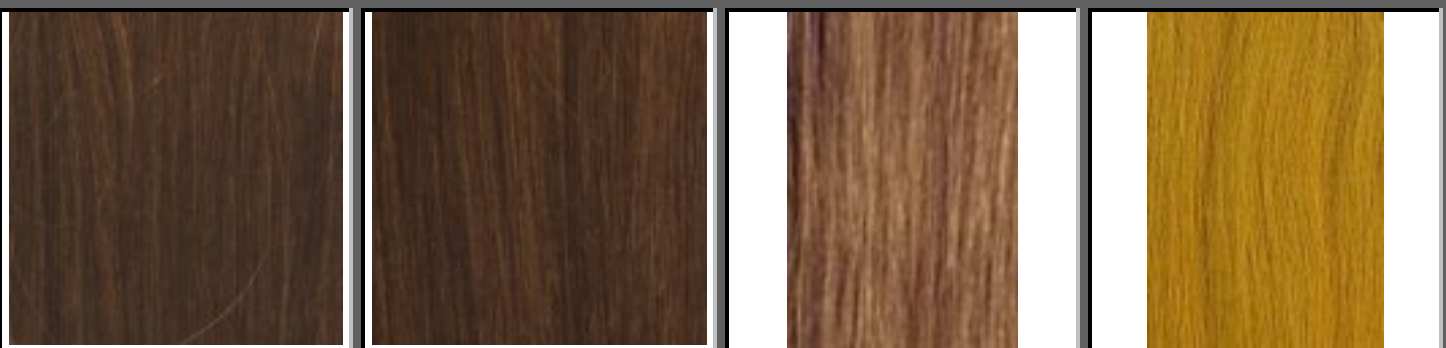


27 - Strawberry Blonde

30 - Light Auburn

33 - Dark Auburn

Plain Colors - Non-Basic

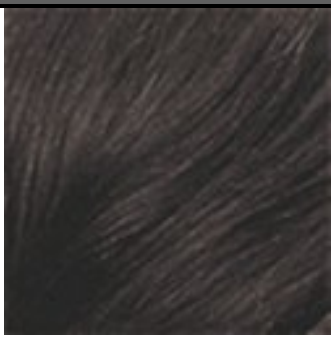


6 - Chestnut Brown

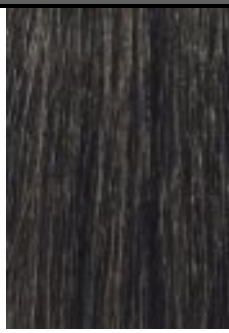
8 - Medium Ash Brown

650

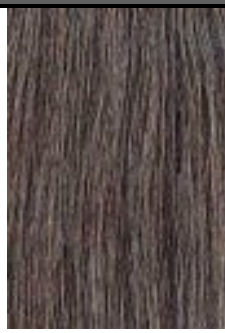
144 - Golden Blonde



280 - 90% almost black with 10% gray



34 - 75% almost black with 25% gray



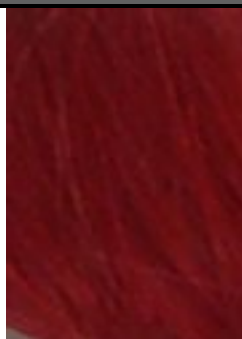
44 - Salt & Pepper 50% gray with 50% brown/black



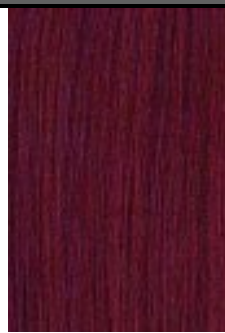
51 - 75% gray with 25% brown/black



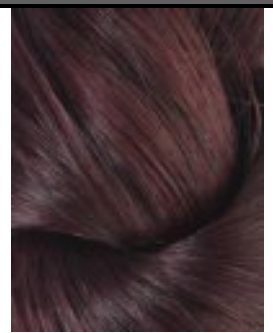
350 - Reddish Auburn



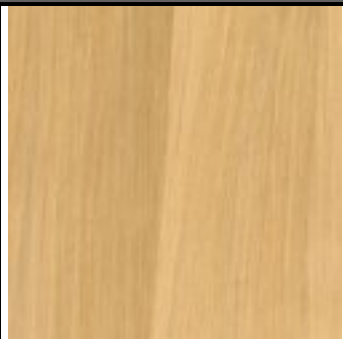
RED



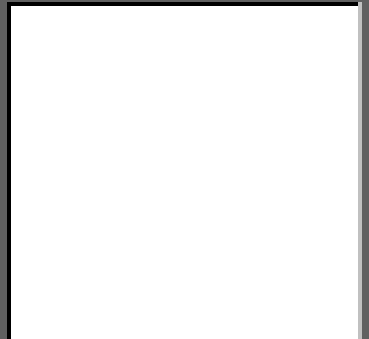
BG (M) - Burgundy



99J - Dark Burgundy



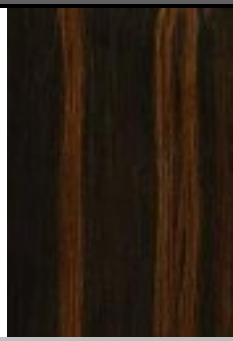
613 - Blonde



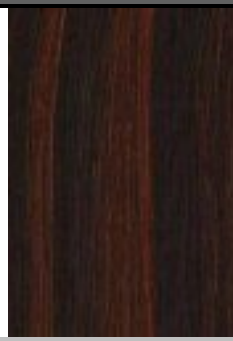
F Colors - Mix color side by side like piano



F1B-27



F1B-30



F1B-33



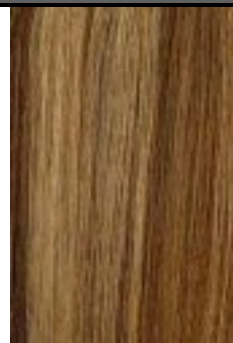
F1B-350



F1B-BG



F1B-99J



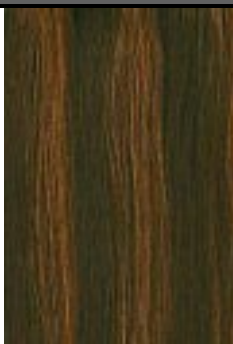
F27-30



F30-33



F4-27



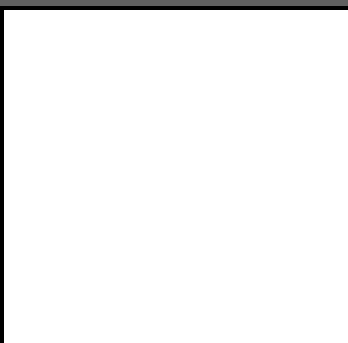
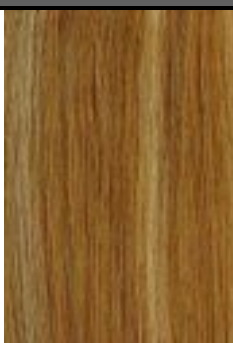
F4-30



F4-27-30



F1B-27-30



F30-144

F27-613

M Colors - Mix color side by side



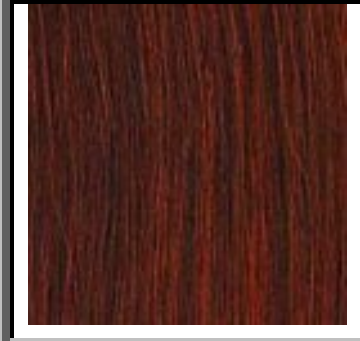
M1B-27



M1B-30



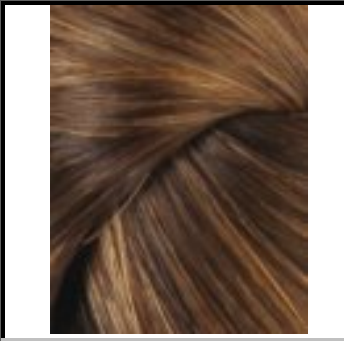
M1B-33



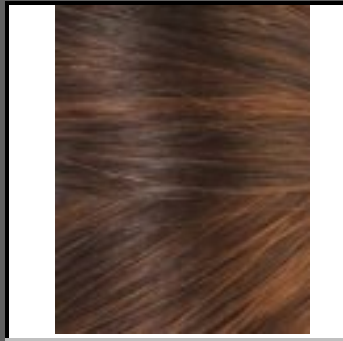
M1B-350



M1B-BG



M4-27




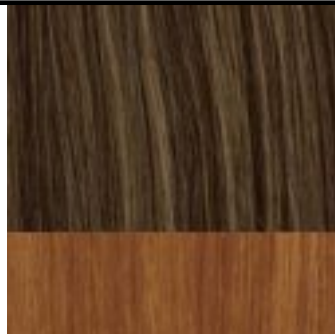
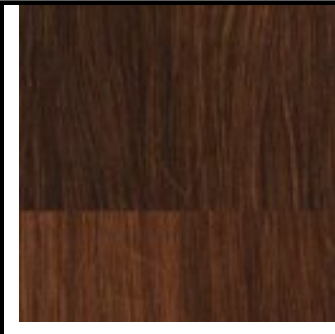
M4-30



M1B-130

T Colors - Example: Tcolor1-color2
Both colors mix on top half,
bottom half color2 only

			
T1B-27	T1B-30	T1B-33	T1B-350

			
T1B-BG	T4-27	T4-30	

TT Colors - Example: TTcolor1-color2
Top half color1, bottom half color2

			
TT1B-27	TT1B-30	TT1B-33	TT1B-350



TT1B-BG